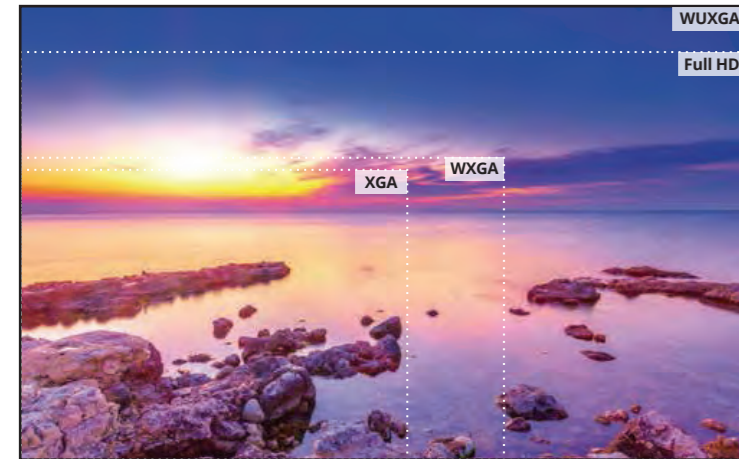


ProAV | For more than ten years Optoma has been one of the world's foremost projector designers and manufacturers - amongst the very few companies that focus exclusively on projectors. Today the Optoma ProAV range represents the evolution of projection expertise, honed and refined by manufacturing and supporting millions of projectors the world over. This knowledge and skill has been distilled into the ProAV products and support services which are designed specifically for demanding professional applications.

Higher education	Museums	Broadcast studios	Conference rooms	Live events	Post production
Lecture theatres	Auditoriums	Large classrooms	Digital signage	Projection Mapping	Theatre
Houses of worship	Boardrooms	Exhibitions	Stage shows	Meeting rooms	Trade shows

Image Quality Reliability | Superb image quality is at the heart of every ProAV product design. At every step, commencing with the incredibly reliable, high resolution WUXGA DLP® chip, where the image is initially created, via the laser-phosphor light source, through to the precision optics to focus the image on screen, accuracy and integrity of the image are paramount. ProAV chose DLP® technology for its image quality and unmatched reliability. The reflective nature of DLP® micro-mirror technology provides highly efficient bright images with great contrast whilst maintaining precise color accuracy and natural, real-world colour reproduction. For demanding professional applications, the proven reliability of DLP® technology makes it the obvious choice.



Better than Full HD resolution

Where detail really matters, the full WUXGA (1920 x 1200) resolution offers 15% more pixels than 1080p and 60% more than SXGA+. This enables unscaled Full HD video and extra detail. Time code information can be displayed onscreen at the same time, perfect for soundtrack recording & video editing where precise timing can be critical.

Precision optics

High quality glass optical elements maintain optimum sharpness and focus uniformity over the entire image. The ProAV insistence on uncompromising optical quality ensures extremely low colour flare and chromatic aberration resulting in a crystal clear, high contrast image.



Worldwide Technical and Commercial Support |

Optoma Europe

Optoma Europe Ltd. 42 Caxton Way The Watford Business Park Watford Hertfordshire WD18 8QZ UK Tel: +44 (0) 1923 691 866	Optoma Deutschland GmbH WIESENSTRASSE 21 D40549 Düsseldorf Germany Tel: +49 (0) 211 506 6670	Optoma France Batiment E 81-83 avenue Edouard Vaillant 92100 Boulogne Billancourt France Tel: +33 (0) 1 41 46 12 20	Optoma Spain C/ José Hierro,36 Of. 1C 28529 Rivas VaciaMadrid Madrid Spain Tel: +34 91 499 06 06	Optoma Benelux Optoma Benelux BV Randstad 22-123 1316 BW Almere The Netherlands Tel: +31 (0) 36 820 0252
---	---	---	--	--

Optoma Europe

Optoma Czech Tel: +42 0608666090	Optoma Poland Tel: +48 507 090 411	Optoma Romania Tel: +40 723 764 995	Optoma Russia Moscow Tel: +7 905 553 67 78	Optoma Italy Tel: +39 3408521552
--	--	---	---	--

Optoma Europe

Optoma Scandinavia Lerpeveien 25 Postboks 9515 Åskollen 3038 Drammen Norway Tel: +47 32 98 89 90	Optoma Turkey Tel: 07775 822134	Optoma UAE Tel: 0097 155 574 8922	Optoma USA Headquarters 3178 Laurelview Ct. Fremont, CA 94538 Tel: (510) 897-8600	Taipei Office 12F, No.213, Sec. 3, Beixin Rd., Xindian Dist., New Taipei City 231, Taiwan Tel: +886-2-8911-8600
--	---	---	---	--

Optoma Asia

Taichung office 7F-5, No.3, Lane 2, 1st Rd, Taichung Industrial Park, Xitun Dist., Taichung City, 40767, Taiwan Tel: +886-4-3505-0336	Kaohsiung office Rm. D, 7F, No.108, Zhonghua 3rd Rd., Qianjin Dist., Kaohsiung City 80145, Taiwan Tel: +886-7-952-5689	Shanghai office 5F, No. 1205 Kaixuan Road, Changning District , Shanghai Tel: +86-21-6294-7376	Beijing office 20D apartment 3, Build No.3, Yindu Tower, No 48 ZhiChun road, HaiDian district, Beijing Tel: +86-10-5873-1919	ShenYang office Room1201, building C3, Wulihe Tower, No 4-1 WenTi road, HePing district, ShenYang Tel: +86-024-3188-7018
---	--	--	---	--

Optoma Asia

Xi'an office Room 1310, building B, ShiMao tower, GuanDongZheng street, Xi'an Tel: +86-029-8228-2428	GungZhou office Room 602, NanTie Tower, No.57 No.1ZhongShan road, YueXiu district, GungZhou Tel: +86-20-6128-0990 / +86-20-6128-1025	ChongQing office Room 9-2, building 19 HuaYuMingDu, ShiQiaoPu, ChongQing Tel: +86-23-6879-7626	ChengDu office Room A3 floor 20, building A Time digital square, No.1 South RenMin road, ChengDu Tel: +86-28-8523-1553 / +86-28-8631-7092	Hong Kong office Unit A, 27/F., Dragon Centre, 79 Wing Hong Street, Cheung Sha Wan, Kowloon, Hong Kong Tel: +852-2396-8968
--	--	---	---	---



- Spectacular Image Quality
- Outstanding Brightness
- Ultimate Reliability



ZU650 Laser-phosphor light source
Bright detailed images
Installation flexibility
Unobtrusive
HDbaseT

ProAV
PROJECTOR series

The Optoma ZU650 laser-phosphor projector provides up to an astonishing 20,000 hours of impressive, virtually maintenance free operation. This technology eliminates the need for lamp and filter replacements for an even lower total cost of ownership.

Designed for meeting rooms, boardrooms, auditoriums, and other large venues, the laser-phosphor light source delivers great colors and more consistent brightness, along with high resolution and contrast for stunning quality images. It is also ultra-quiet making the ZU650 an ideal companion for quieter environments, smaller rooms or those with lower ceilings.

Reliability

Constant Brightness

Some installation applications such as control rooms, simulations and museum exhibits don't require the full brightness of the ZU650. In this case lowering the brightness can extend the laser-phosphor light source life span and "constant brightness" modes can be enabled to keep the brightness more consistent for longer without the need for costly lamp changes.

Enhanced Color Gamut

The laser-phosphor light source provides benefits such as a sealed mercury free optical design to prevent dust entering the projector, minimal warm-up and cool-down time, and long life light source operation of up to 20,000 hours with minimal maintenance.

Flexibility

Installation Flexibility

To help meet the seemingly limitless challenges of installations the ZU650 provides 5 lens options with motorised zoom and focus to ensure you can get the image size you require. Motorised lens shift helps you get the image exactly where you want it.

360° and Portrait Projection Capability

Images can be projected over a full 360° range along the vertical axis, including reproduction on a ceiling or floor. The projector can also be placed in portrait mode for applications such as digital signage or for tall thin projection areas.

HDBaseT

HDBaseT simplifies cabling requirements and reduces installation complexity saving both time and reducing costs.

ExtremeBlack Mode

In situations where only absolute darkness is good enough, the ZU650 has an ExtremeBlack mode to provide total blackout. Perfect for scene changes during live performances where traditionally a mechanical shutter would be used.

Edge Blending Controls

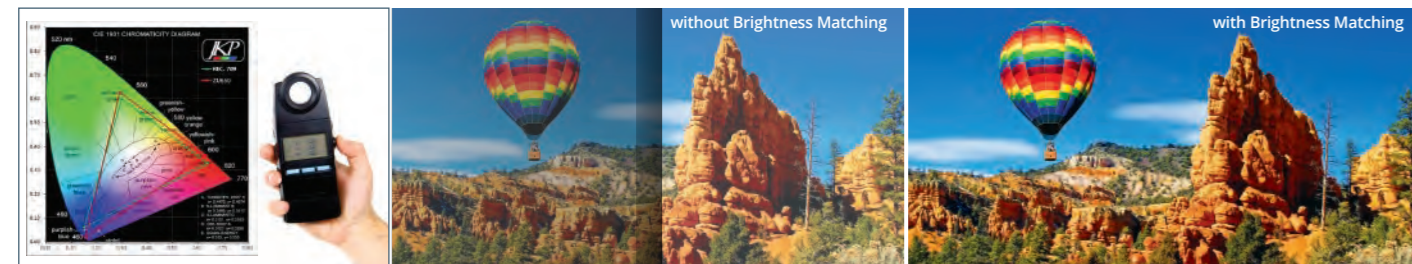
No two projectors are completely identical. When performing complex, or even simple edge-blend projects using multiple projectors, it can be difficult to achieve good results if the images do not match. The ZU650 incorporates the following features to ensure high quality and consistent results:

Color Matching

The ZU650 has a color matching system, which combined with accurate measurements can create seamless blends.

Brightness Matching

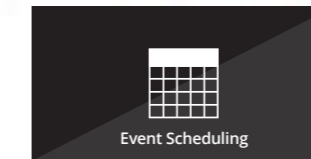
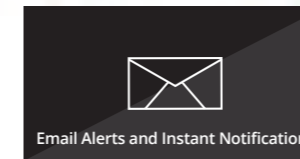
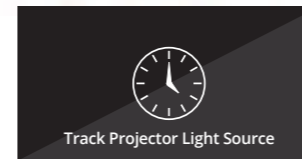
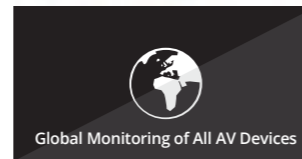
The brightness of a projector will vary throughout its life. To correctly match multiple units, the ZU650 has multiple light source power options to achieve the correct matched brightness level.



Control

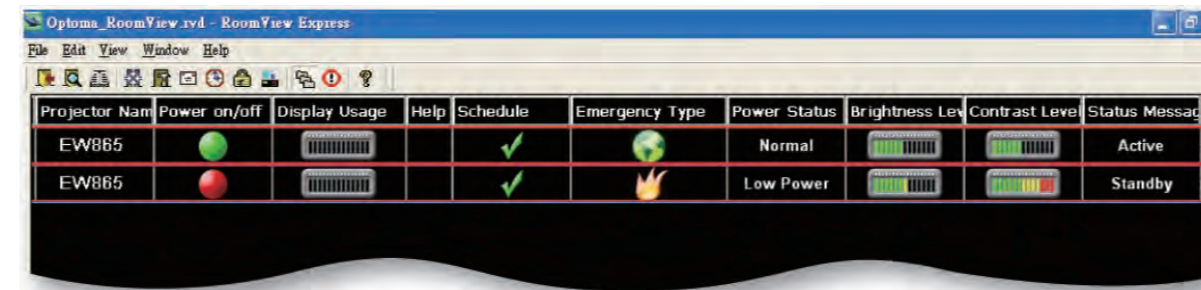
System Integration Control

Multiple ZU650 can be monitored over LAN and also provide the user with an email message alert in case an error occurs or a light source fails or needs to be replaced, using Crestron RoomView. While the web browser interface and full support for Extron's IP Link, AMX dynamic device discovery and PJ-Link protocols, allow almost all aspects of the ZU650 to be controlled across a network, keeping you in control, wherever you are.



Ultimate Control

Cut up to 30% from your energy bills using 24-hour automated power scheduling to ensure that projectors power off when not in use.



Schedule Event

RoomView Express makes scheduling of recurring or one time events easy. Setting RoomView to automatically power down at midnight throughout the week can save valuable light source life and ensure security inside the facility.

Help alert

Real-time interactive help desk requests are sorted to come to the top. The help desk then has the ability to respond with an automatic message or instant message the room with exact procedures.

Display power

Check on/off status of display power and system power. View a bar graph to monitor the percentage of available projector light source usage and set an alert to notify the services department when maintenance is needed.

Display usage

A visual indication of light source or service interval status.

Selected view by rooms, attributes or contacts

RoomView Express gives you the ability to simultaneously view more than 250 rooms from a single screen. Customise RoomView to view by room name, locations and group.

Event log

Automatically generates log files, reports and charts to analyze ROI and budget allocation. Track device usage, call statistics and user history.

Lens Options

Optoma Lens Model Name	A15	A01	A02	A03	A13
Focal Length (f) (mm)	11.11~14.06	14.03~17.95	18.07~22.59	22.56~42.87	42.60~80.90
F Number	2.30~2.53	2.30~2.57	2.00~2.32	2.30~3.39	2.30~2.74
Focus Spec (MTF)	67 lp/mm	67 lp/mm	47 lp/mm	67 lp/mm	67 lp/mm
Zoom Range (ratio)	1.26x	1.28x	1.25x	1.9x	1.9x
Zoom & Focus Adjustment	Motorized				
Throw Ratio	0.75~0.95	0.95~1.22	1.22~1.53	1.52~2.92	2.90~5.50
Throw Distance (m)	0.81~6.13	1.02~7.88	1.31~9.89	1.64~18.87	3.12~35.54
Projection Image Size	50"~300"				

Specifications

Technology	1 x 0.67" DLP
Resolution	WUXGA 1920 x 1200
Brightness	6,000 centre lens (5,500 ANSI lumens)
Aspect Ratio	16:10 native, 4:3 & 16:9 compatible
Dynamic Contrast	2,000,000:1 ExtremeBlack enabled (2000:1 full on/off)
Projection Distance	0.81m to 35.54m (dependent upon lens)
Projected Image Size	50"~ 300" Diagonal 16:10 (dependent upon lens)
Light Source	Laser phosphor
Light source Lifetime	20,000 hrs
Lens Shift (motorised)	± 50% V, ± 15% H (dependant on lens)
Lens Zoom	dependent upon lens
Keystone Correction	Vertical and Horizontal ± 20°
Connectivity	HDBaseT, Wired remote In, Wired remote Out, HDMI, VGA / YPbPr, VGA Out, DVI-D, Component Video, RS-232, USB-mini (service), USB power, RJ-45
Noise Level	33dB
Weight	18Kg (without lens)
Dimensions (W x D x H)	509 x 484 x 185mm (without lens)

I/O Connections

- 01. HDBaseT
- 02. Wired remote In
- 03. Wired remote Out
- 04. HDMI
- 05. VGA / YPbPr
- 06. VGA Out
- 07. DVI-D
- 08. Component Video
- 09. RS-232
- 10. USB-mini (service)
- 11. USB power
- 12. RJ-45

